

# MEPAU in the Mid West

*Mitsui E&P Australia (MEPAU) is a WA-based energy provider with two facilities in the Mid West. MEPAU is significant contributor to the development of a sustainable supply of energy for the nation and in addition to maintaining its energy resource portfolio, is pursuing new low carbon energy and carbon abatement opportunities.*



## Waitsia Gas Project Update

Early-stage commissioning activities have commenced at the Waitsia Gas Plant while gas plant construction is continuing, with the aim of optimising project delivery in 2024.

The primary goal of commissioning is to ensure the project that has been built will perform and operate as it was designed to do.

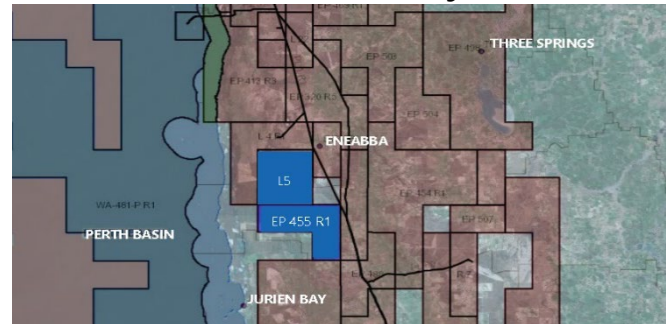
From November 2023, over a period of three to four months, it can be expected that there will be:

- Light from visible flaring while the safety system is tested and verified; and
- Noise as equipment is started and brought online.

For the latest schedule of activities, go to [mepau.com.au](http://mepau.com.au).



## Join us for a Community Information Forum on 2D seismic survey activities



MEPAU is hosting a Community Information forum in Eneabba on 20 September to provide information about upcoming 2D seismic survey activities in the Shires of Carnamah and Coorow for the end of 2023 and into 2024.

The information forum is to provide an opportunity to hear from MEPAU's Vice President of Exploration & Geoscience, Andy Furniss, and the survey team on how 2D seismic surveys work, the equipment that will be used in the field, and to answer questions from the community.

The area to be surveyed is within an exploration permit (EP455) and a licence (L5) which are operated by MEPAU and located ~1.5km south-west of Eneabba (see map above).

For more information, please email [contact@mepau.com.au](mailto:contact@mepau.com.au)



Please join us!

### COMMUNITY INFORMATION FORUM

Wednesday, 20 September 2023 | 12pm-1pm

Eneabba Recreation and Sporting Club

light lunch provided

### Providing feedback

We welcome any comments or interest you may wish to share, please contact MEPAU via [contact@mepau.com.au](mailto:contact@mepau.com.au)

